



شركة سماك كونتركتنج العربية المحدودة

SMAC Contracting Arabia Co. Ltd.

STEEL FABRICATION

MANUFACTURERS OF SCAFFOLDING

RENTAL & ACCESSORIES



**Specialists in MS Stainless Steel  
Steel Fabrication &  
Manufacturing of Scaffolding**

- All Type of Storage Tanks (Cylindrical and Rectangular) and Silo's
- Industrial Structures - Machinery Structures, Pipe Racks, Frames and Cyclone Dries, All Types of Mixers, Boiler Platforms
- Concrete Batching Plant and Crusher - Wear Parts for Mixtures, Liner, Scraper, Paddle Etc.
- Ornamental Design & PEB Structural Works
- Handrails, Staircase
- Weigh Bridge Structures
- Prefab Buildings.
- Mobile Fuel Stations
- Cup Lock System Scaffolding
- Rental & Accessories



**WE BUILD THE TRUST BY PROVIDING TECHNICAL SOLUTION**

SMAC Contracting Arabia Company Limited





## Introduction

**The SMAC Contracting Fabrication Division** previously known as Tobal has more than 15 year's experience in the field of fabrication sectors by providing solutions in the field of repair, maintenance, fabrication, erection, wear & tear solutions with special plate and electrode.

## Mission

To be a leader in steel products manufacturing in the global market by providing with high quality products and to be best of the customer satisfaction. Our goal is to become the customers most preferred choice by attaining excellence in quality and timely completed value-added projects. To continuously be innovative, develop and adopt state of the art technology in methods and materials to enhance productivity with cost effectiveness. To continuously improve the skills and competence of our employees.

## Vision

The vision statement has been inspired by the global infrastructure development needs of tomorrow, with the customer as the central focus. It was developed after conducting a series of in-house workshops. Senior leaders within the organization actively involved in developing and maintaining an effective and efficient management system to disseminate the vision across SMAC in order to achieve "Customer Delight".

## Quality Assurance & Quality Management

It is the policy of SMAC to consistently provide customers with high quality service matching their requirements and expectations.

SMAC has developed and implemented its quality management system in order to ensure that we remain customer focused all the time and set quality objectives, measures, analyze and act upon the results in order to achieve continuous improvement.

We believe that our employees are our greatest assets and our policy is to ensure that everyone is aware of the importance of the customers needs and requirements and accordingly will play an important role in achieving our objectives.

We are striving hard for the satisfaction of our customers by providing them quality products and services at all times.



## Introduction

The **SMAC Contracting Steel Fabrication** company offers a complete line of welded steel storage tanks, silo, steel structure, mazzine floors, stainless steel and manufacture of scaffolding.

**S M A C Ltd.** will follow all ISO and welding standards like

API (American Petroleum Institute)

ASTM - 9 (American Society for Testing Materials)

AWS (American Welding Society)

ASME IX (Boiler & Pressure Tank)

UL - 58 (Steel Underground Tank for Flammable & Combustible Liquids)

UL - 142 (Steel Above Ground Tanks for Flammable & Combustible Liquids).

## Fabrication

**S M A C Ltd.** are familiar with steel structure works storage tanks, silo, manufacture of scaffolding following ASME IX, welding standards. Quality schedule and safety are our primary concern.

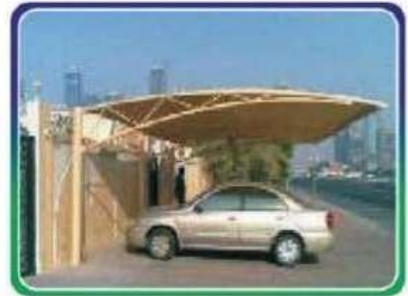
## Engineering

Innovative designs, forward looking designs, tanks usability and attention to your bottom line are some of the many benefits of **S M A C Ltd.** brings to the table. **S M A C Ltd.** is committed to resolving the challenges confronting the above & underground storage tanks / silo industry. Our success is attributed to our exceptionally service oriented staff who is dedicated to providing quality products and efficient service with a second to none safety program.

## Installation

**S M A C Ltd.** fabrication done in our factory after fabrication.  
Installation doing in various cities.









# QIDDIYA WATER THEME PARK







# QIDDIYA WATER THEME PARK







# QIDDIYA WATER THEME PARK







# QIDDIYA WATER THEME PARK



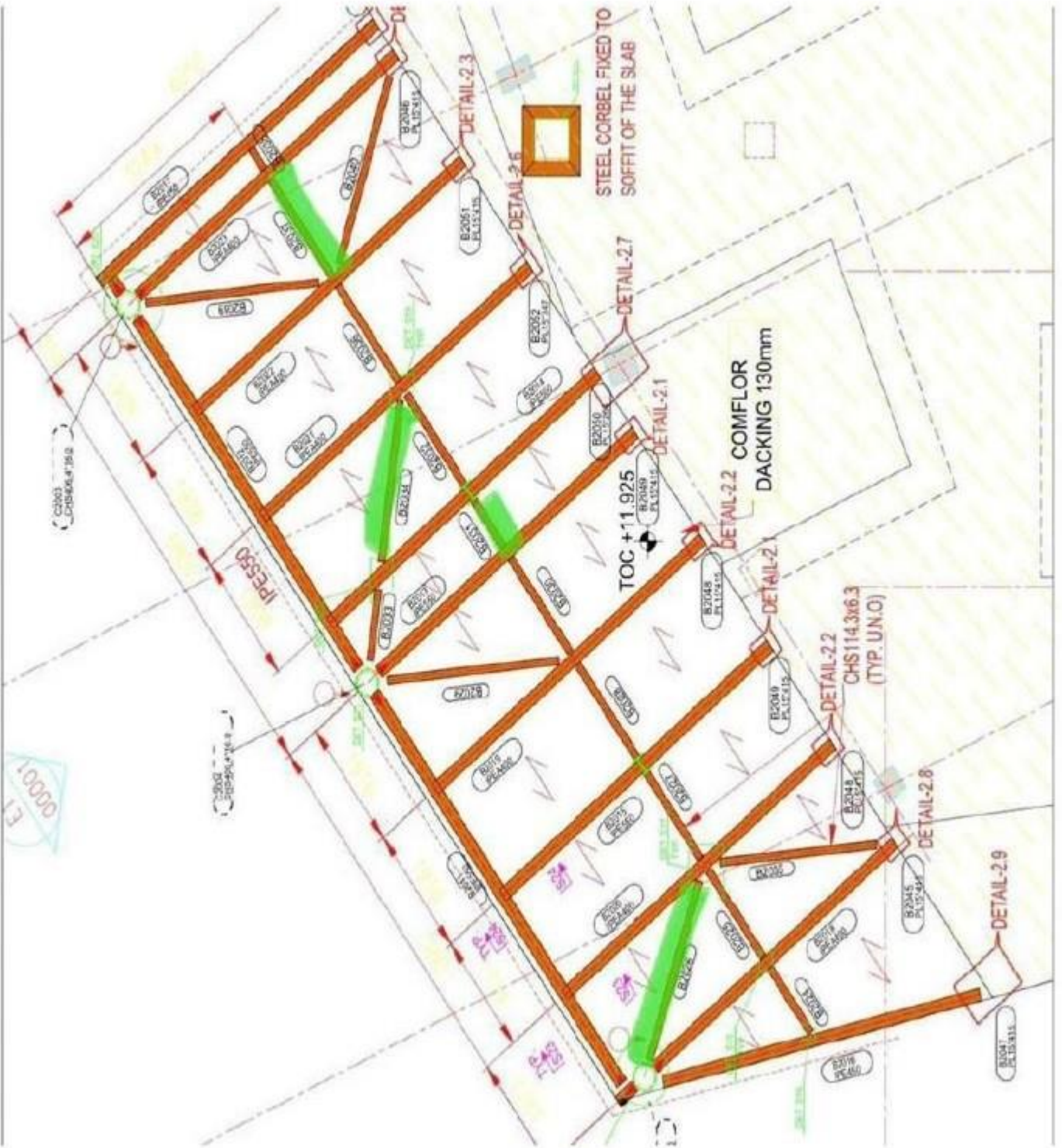




# QIDDIYA WATER THEME PARK



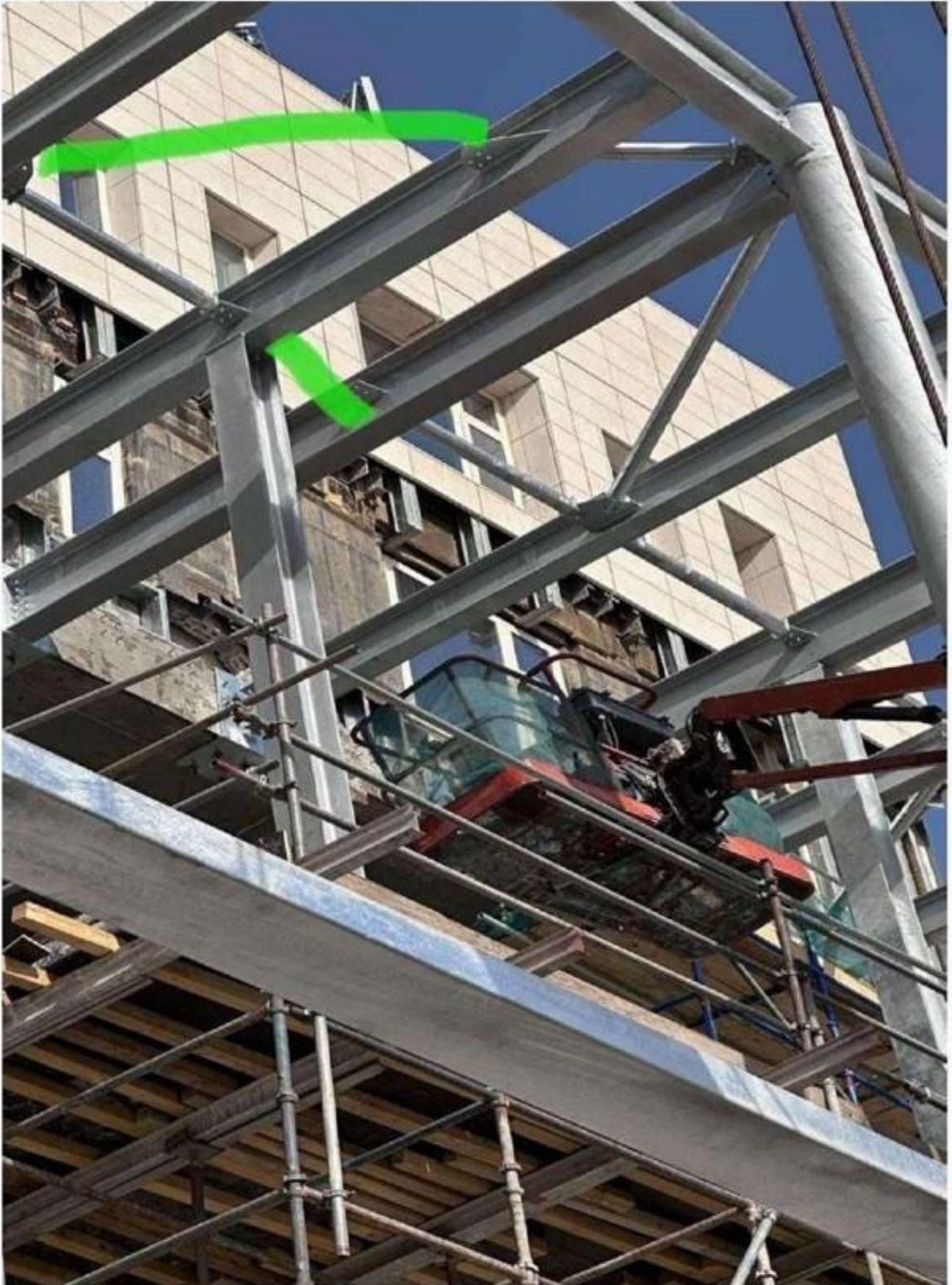








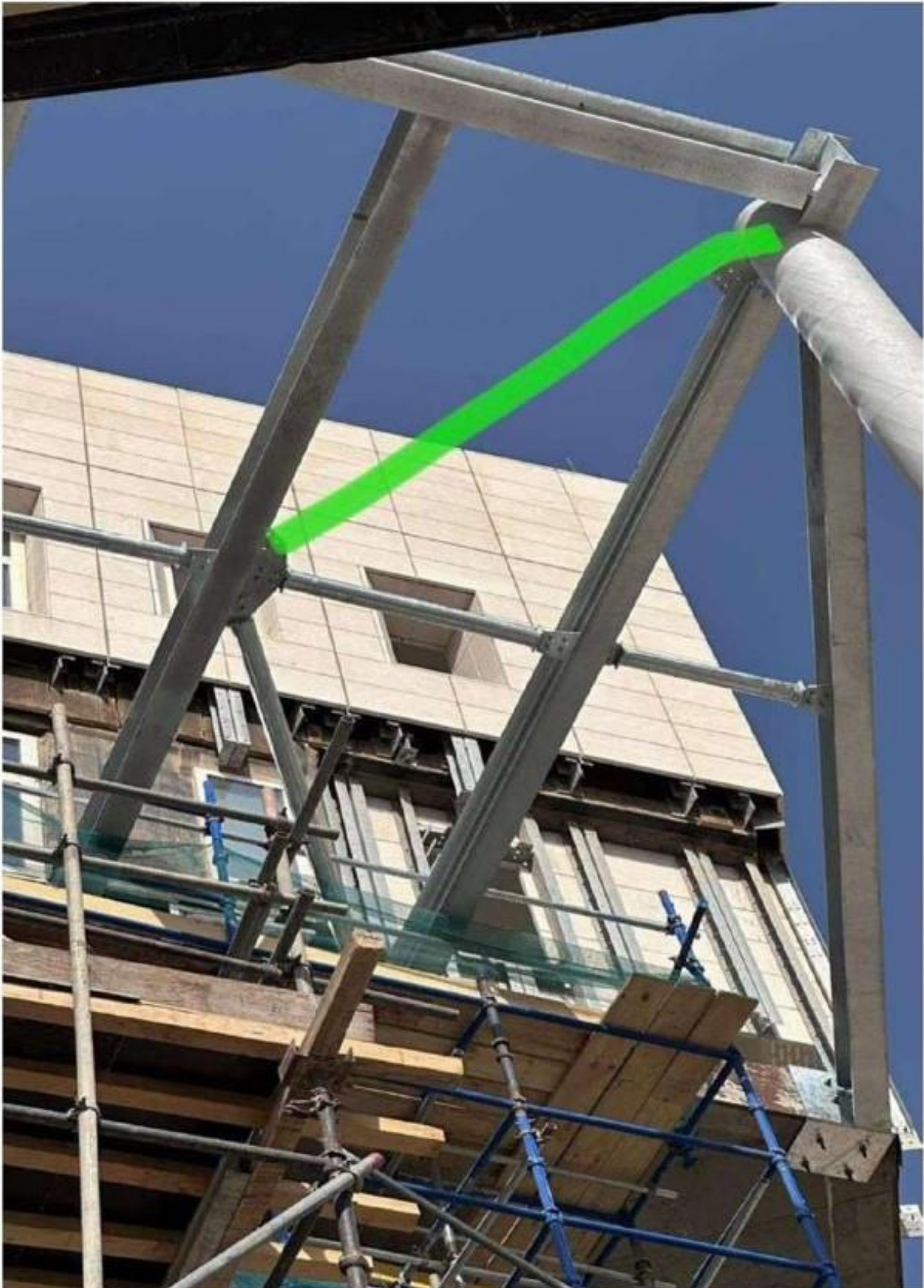
# KAFD - RIYADH







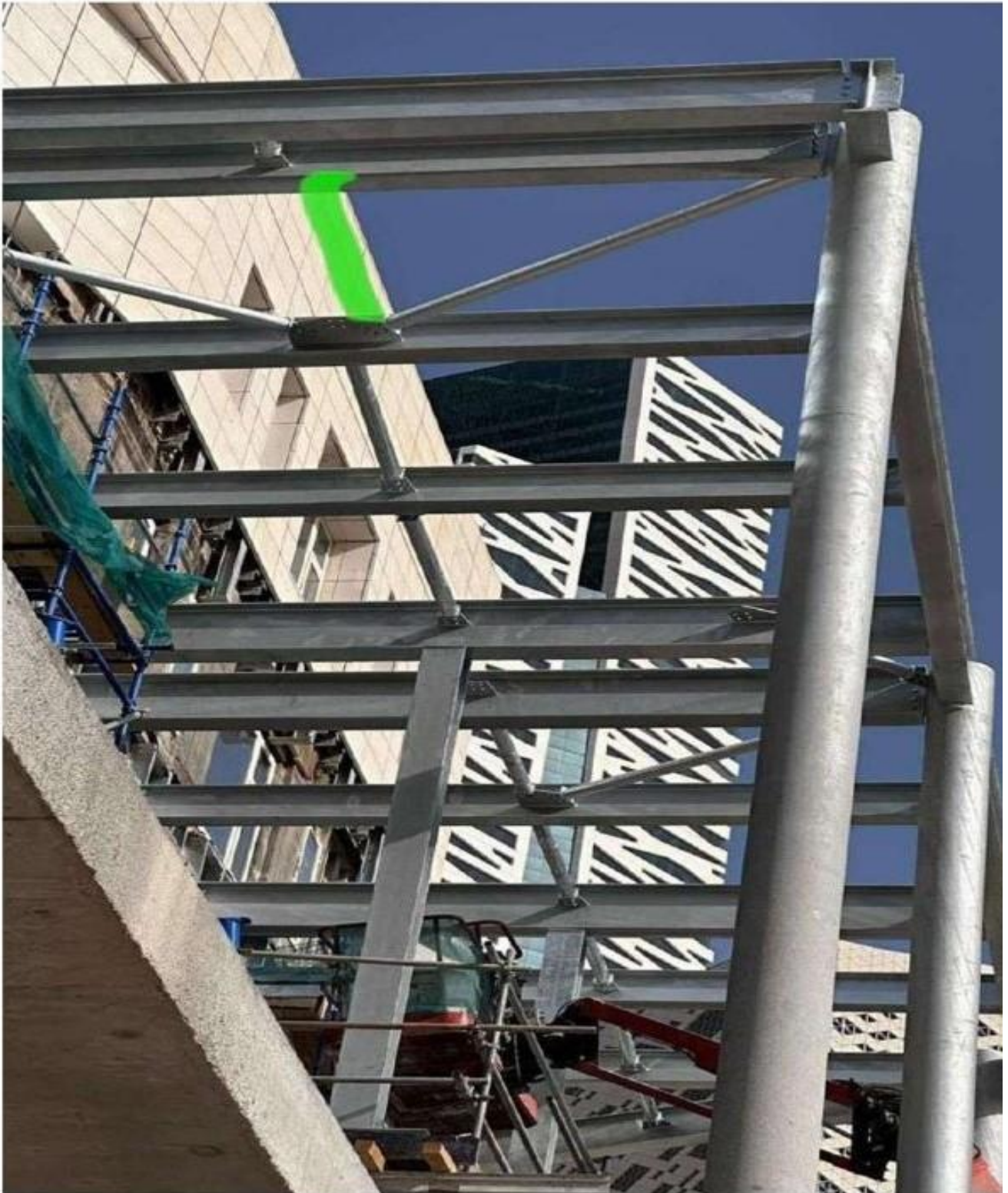
# KAFD - RIYADH







# KAFD - RIYADH







# SWCC- PIPERACKS- RABIGH







# SWCC- PIPERACKS- RABIGH







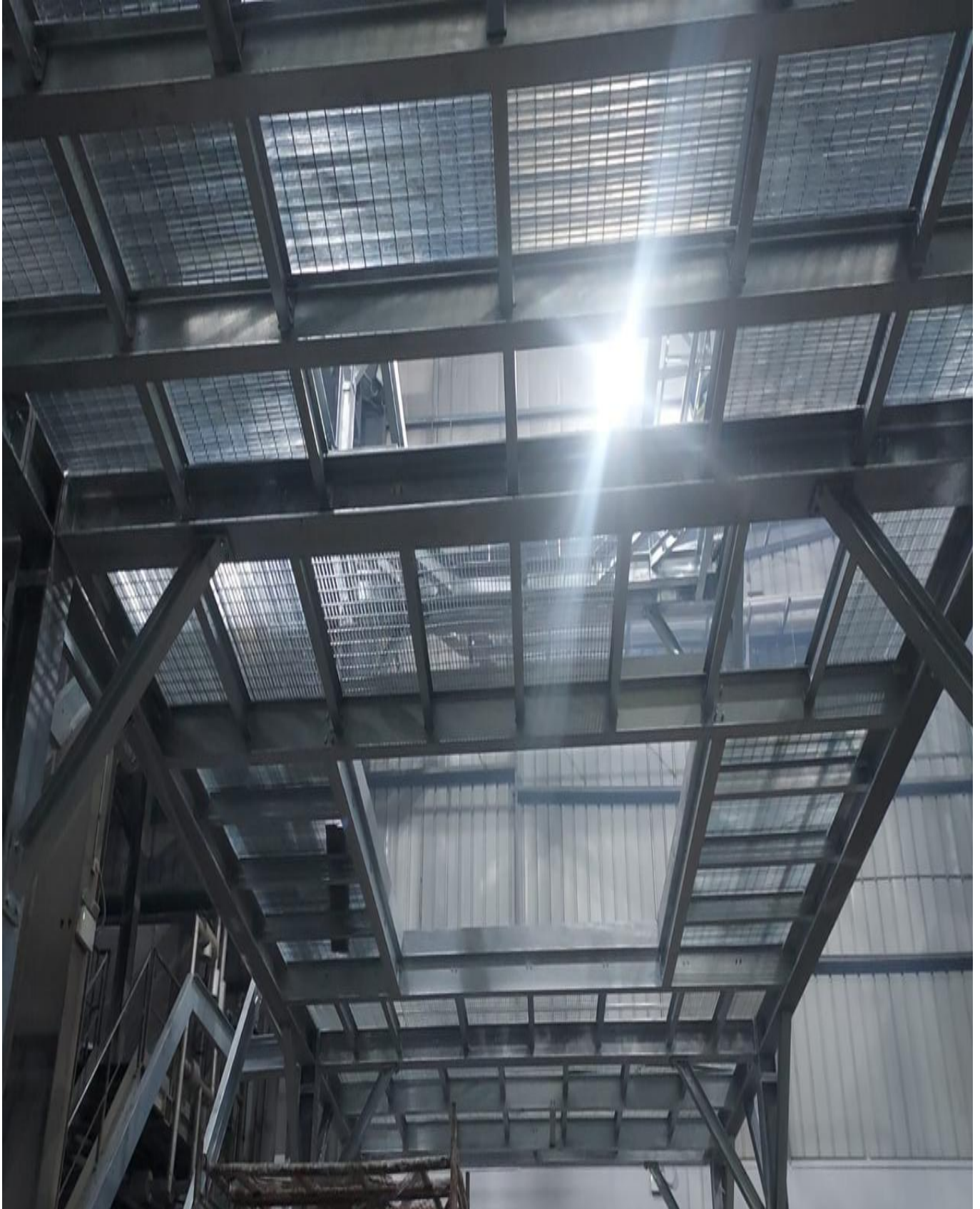
# SWCC- PIPERACKS- RABIGH







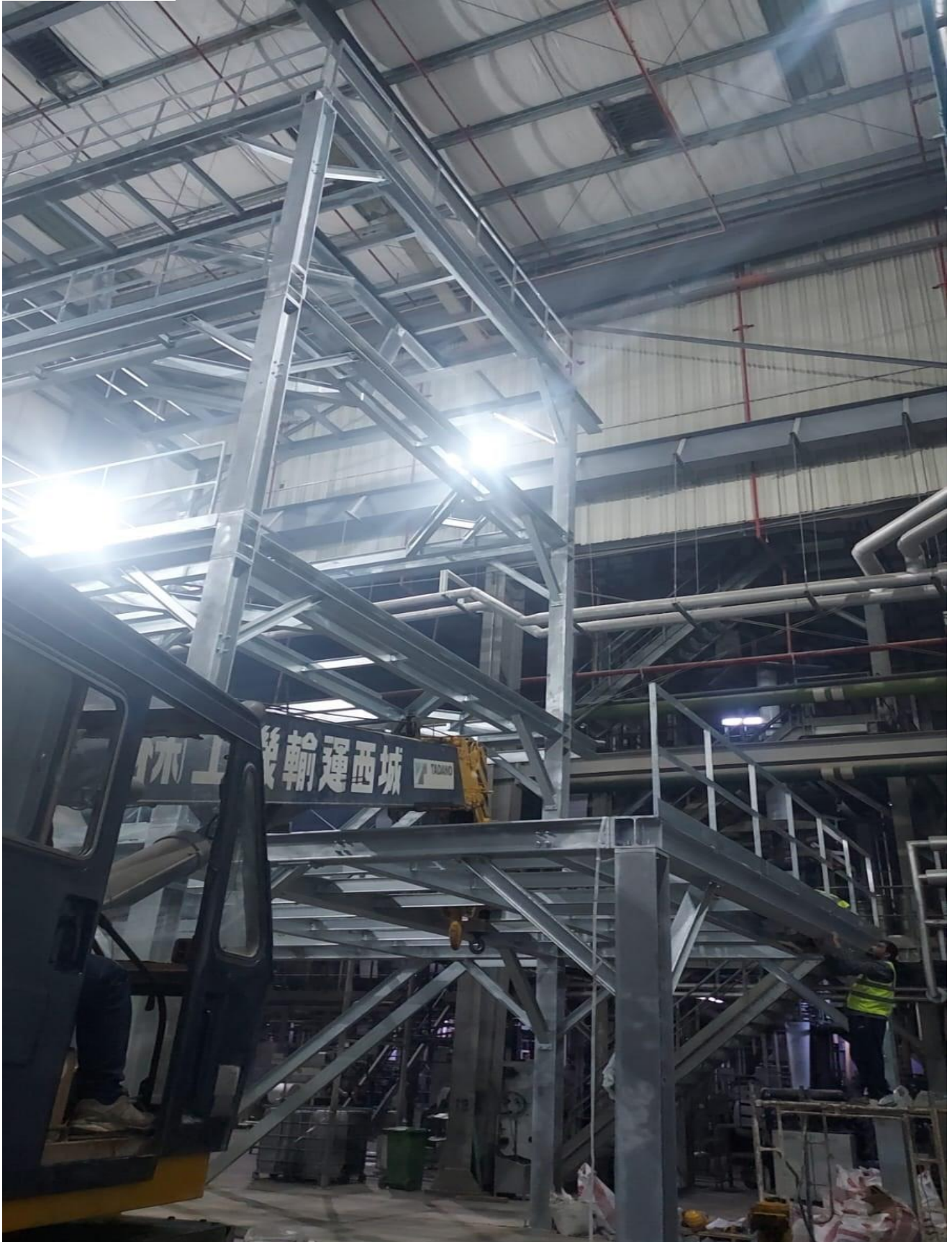
# WATANIA PLASTICS- RIYADH







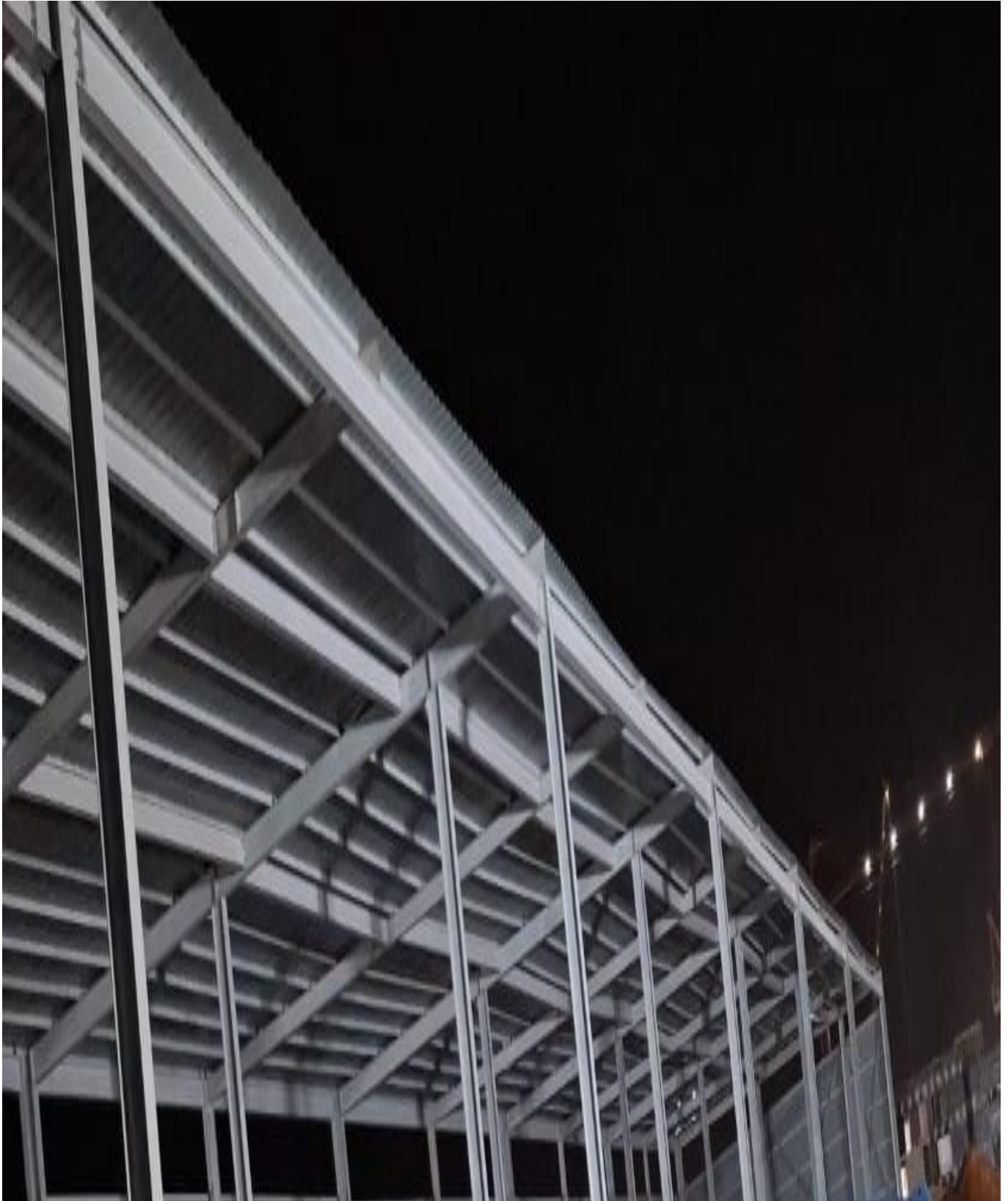
# WATANIA PLASTICS- RIYADH







## AGGREGATE SHED-MISK CITY RIYADH







## AGGREGATE SHED-MISK CITY RIYADH







# BATCHING PLANT-QIDDIYA WATER THEME PARK







# BATCHING PLANT-QIDDIYA WATER THEME PARK







# BATCHING PLANT-QIDDIYA WATER THEME PARK







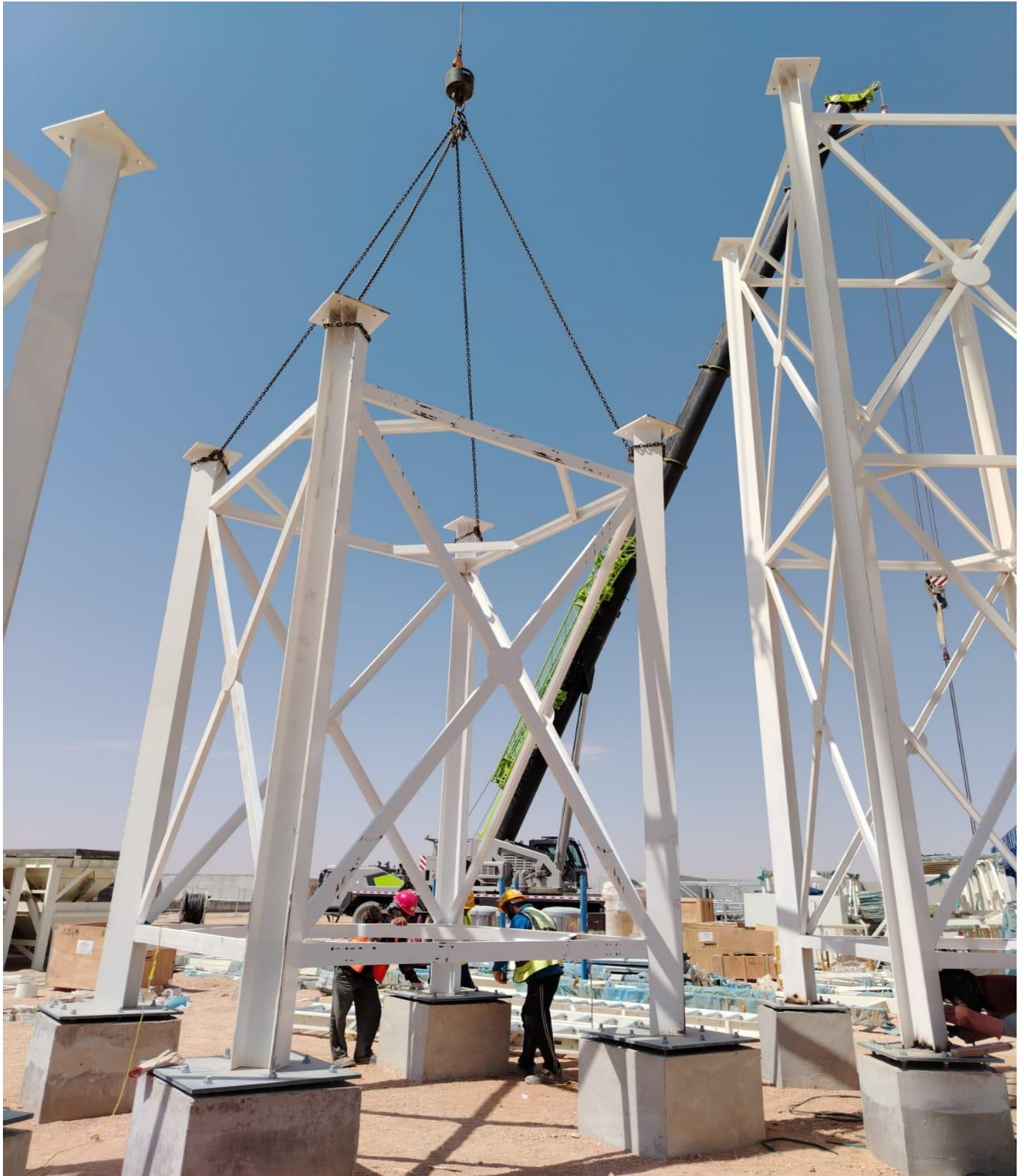
# BATCHING PLANT-QIDDIYA WATER THEME PARK







# BATCHING PLANT-QIDDIYA WATER THEME PARK



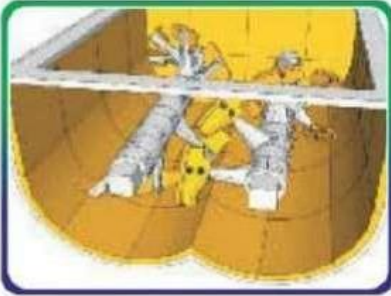




شركة سماك كونتركتنج العربية المحدودة  
SMAC Contracting Arabia Co. Ltd.







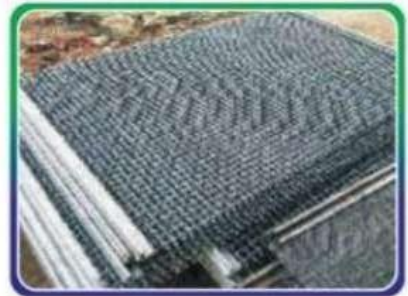








شركة سماك كونتركتنج العربية المحدودة  
SMAC Contracting Arabia Co. Ltd.



Lining Example-Best Feasible Solution

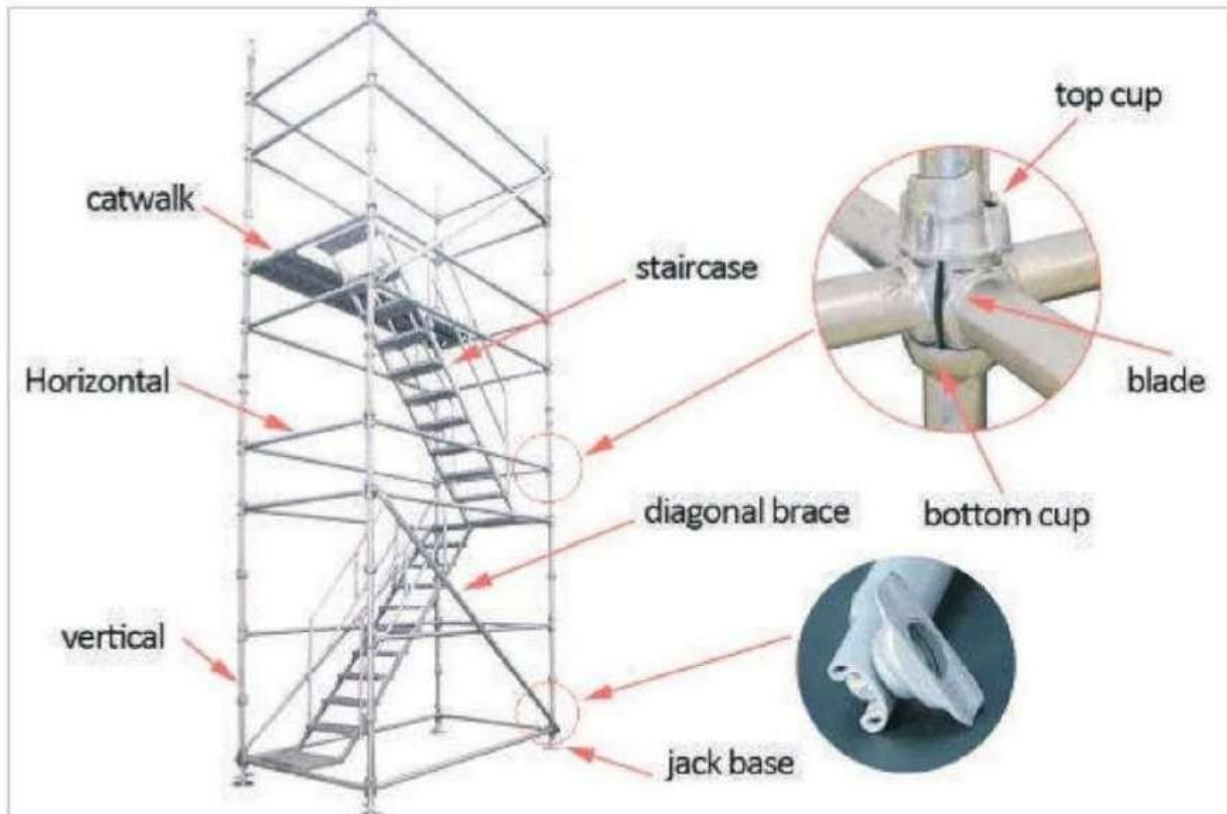
	MS	Hardox 400	Hardox 500	Hardox 600
Hardness	140HB	400 HB	500 HB	600 HB
Plate Price	2200	4500	5000	6500
Drilling Costs	1600	2000	2400	2900
Cutting Cost	250	270	300	350
Transport Costs	300	300	300	300
Attaching Plates	1100	1100	1100	1100
Service life	1.0	2.1	4.5	6.3
Lifetime in days	100	210	450	630
Total costs/life days fictive money	54.5€/day	39.0€/day	20.2€/day	17.7€/day

- 2500X6000X30 mm
- 112 Liner Plates at size 300X400 mm
- 156800 mm Flame Cutting
- 448 Counter Sunk Holes

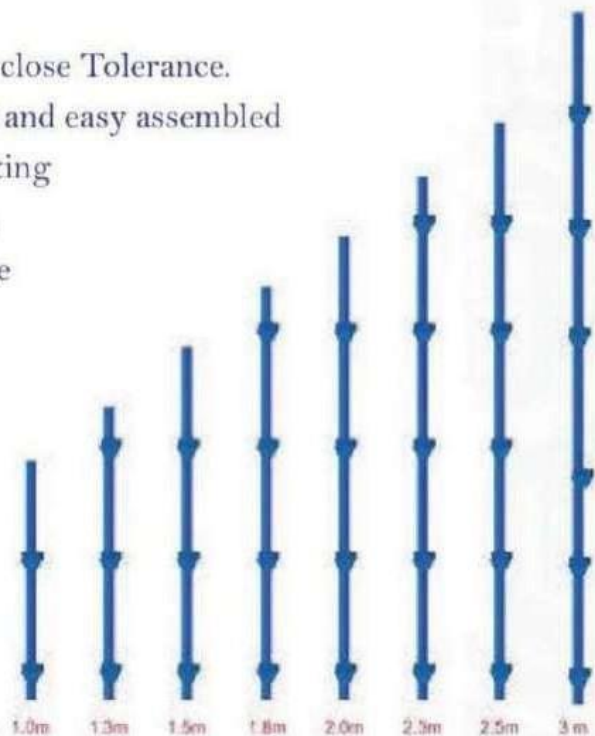


Manufacturers of Scaffolding

Cup Lock System



- 1) Suitable for any type of Flock States
- 2) All Items are Manufactured to a very close Tolerance.
- 3) All items are engineered to be weight and easy assembled
- 4) Simple method of component connecting  
ledgers are located in the bottom cup,  
the upper cup is the slid down over the  
top of the blades. Until it locked pins



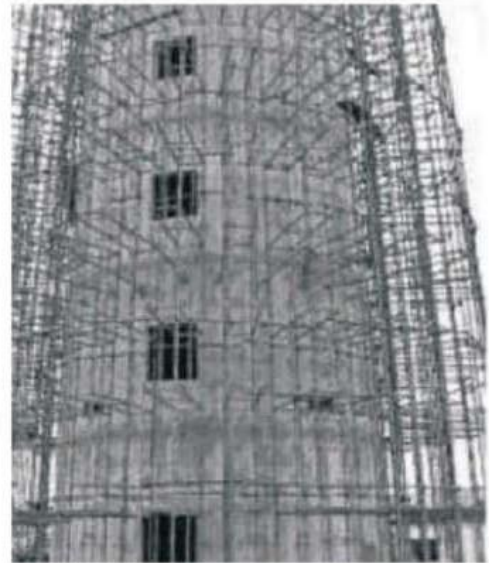
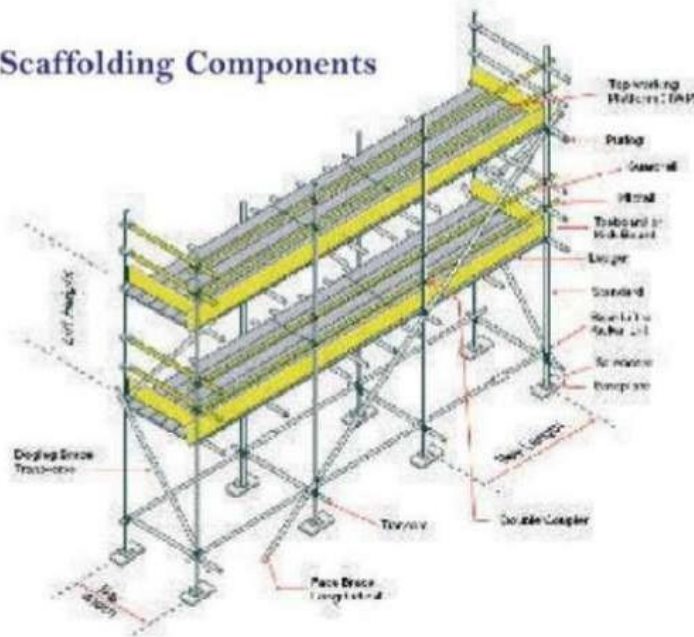
Cup Lock Standard Verticals





Manufacturers of Scaffolding  
Components Assembled for Scaffolding

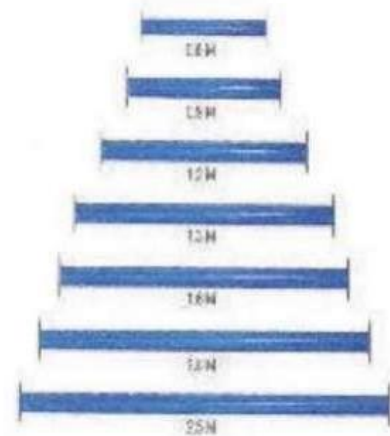
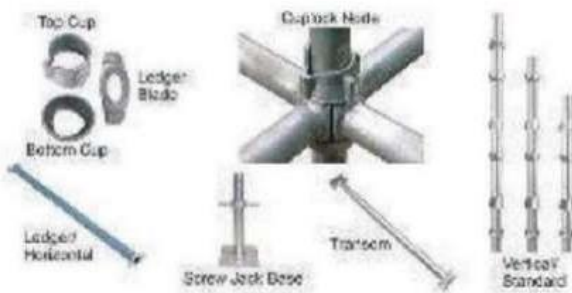
Scaffolding Components



Standard



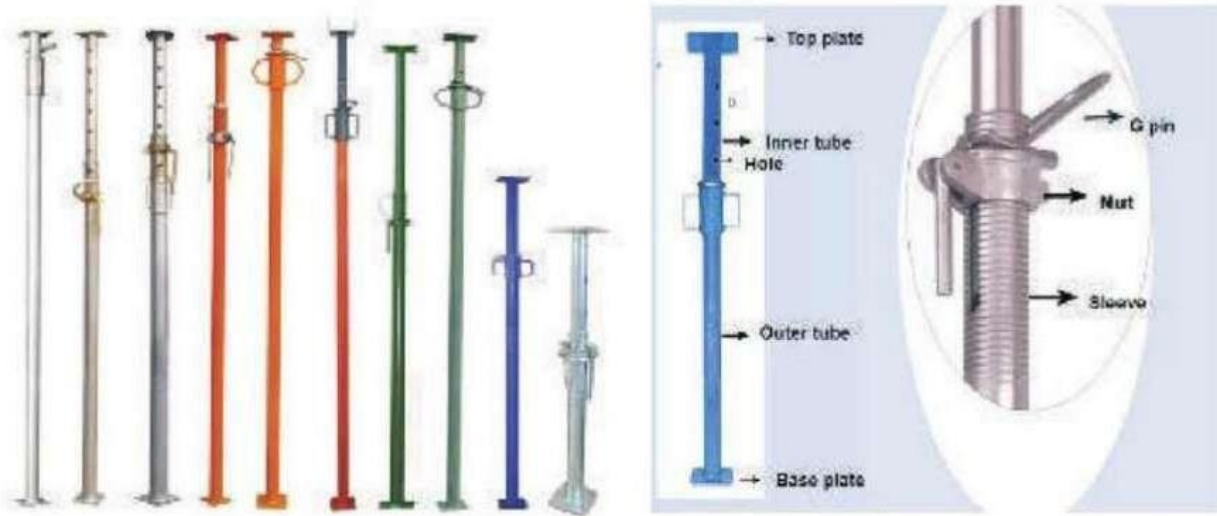
Adjustable Jack



Ledger Horizontal



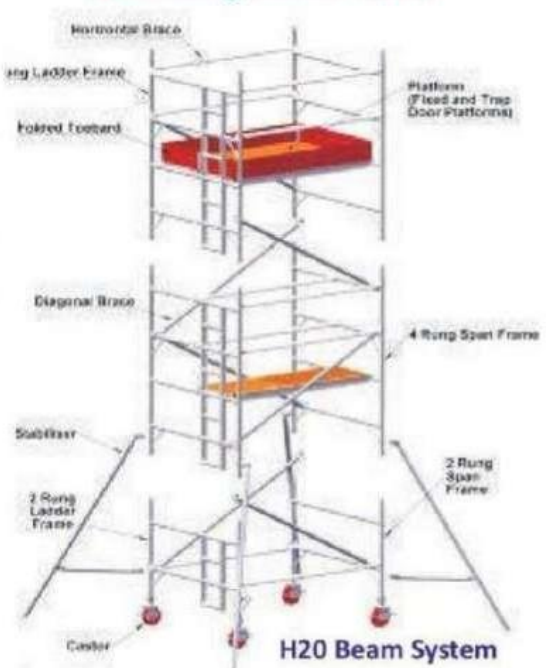
## Manufacturers of Scaffolding Scaffolding Prop Jack



### Scaffolding Accessories



### Scaffolding Mobile Tower







شركة سماك كونتركتنغ العربية المحدودة  
SMAC Contracting Arabia Co. Ltd.



**SMAC Contracting Arabia Co. Ltd.**  
**STEEL FABRICATION**  
**MANUFACTURERS OF SCAFFOLDING**  
**RENTAL & ACCESSORIES**



**Syed Mustaq**  
**+966 50 326 5217**



**Mohammed Arif**  
**+966 54 621 1229**



**Omar Shaik**  
**+966 53 464 7276**

Email - [info@maic-sa.com](mailto:info@maic-sa.com)  
Website - [www.maic-sa.com](http://www.maic-sa.com)